



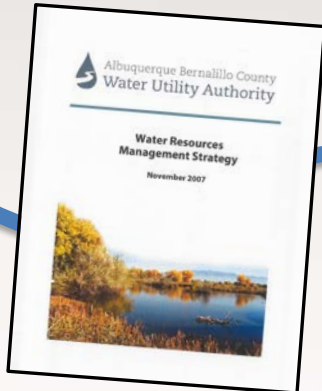
NM Water Dialogue at 25: Planning for Uncertainty

**RICK SHEAN, WATER RIGHTS PROGRAM MANAGER
ALBUQUERQUE BERNALILLO COUNTY WATER UTILITY
AUTHORITY**

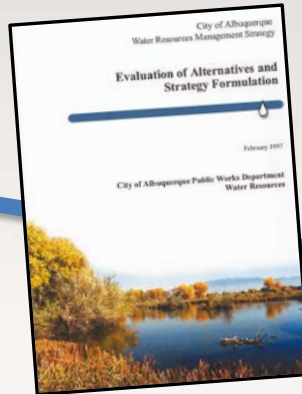
JAN. 10, 2019

Water Authority's Water Resource Management Strategy History

1997

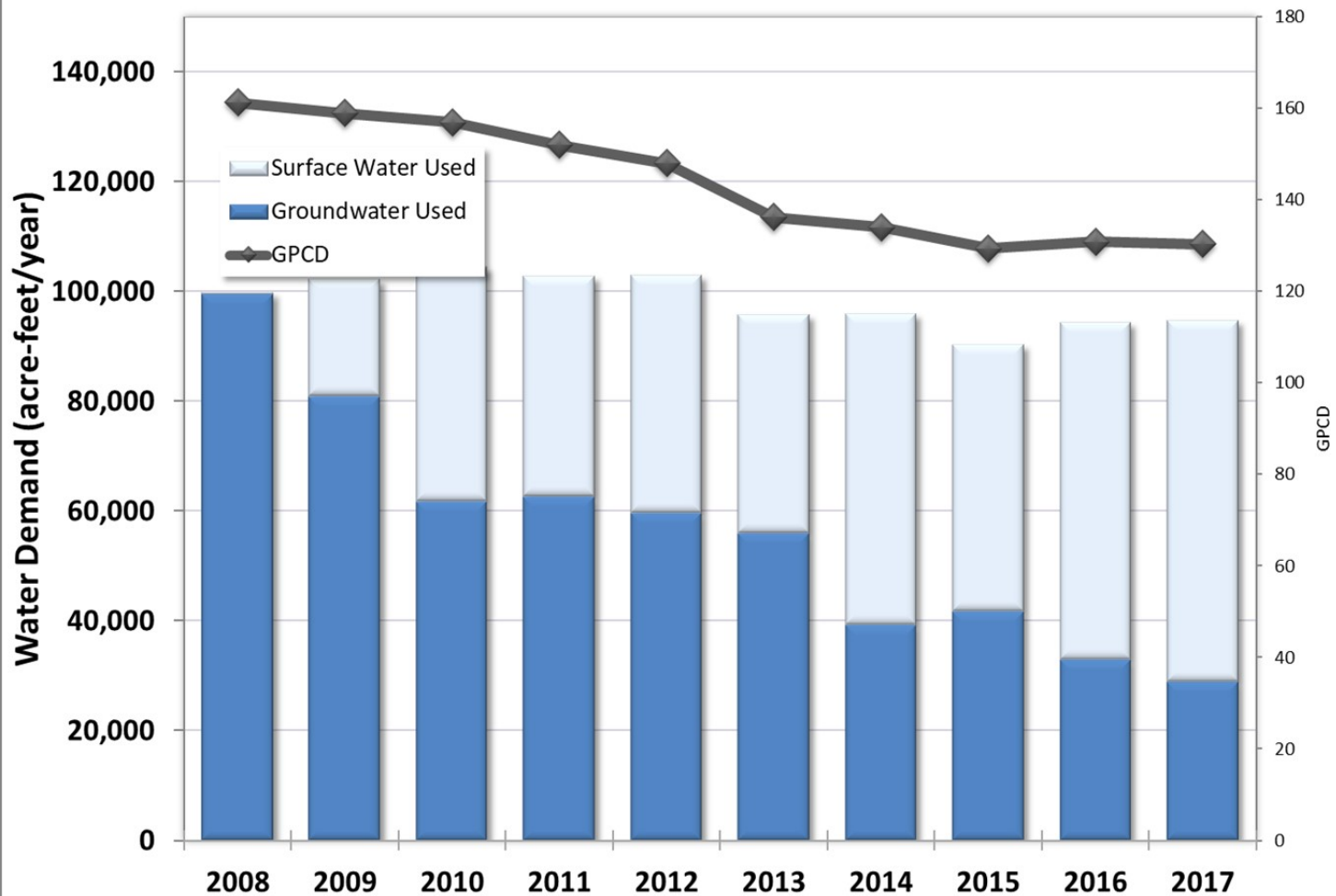


2007



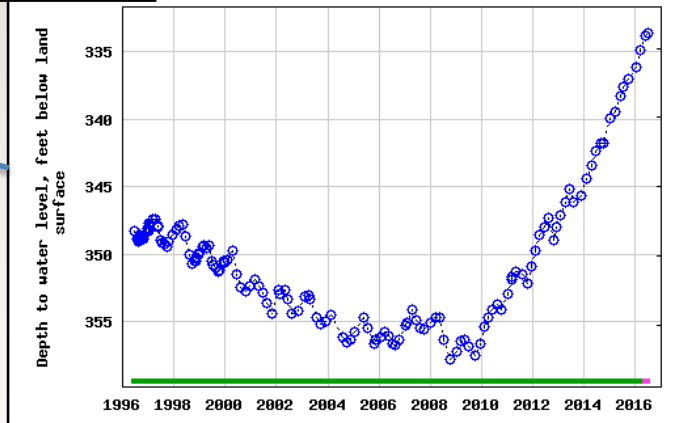
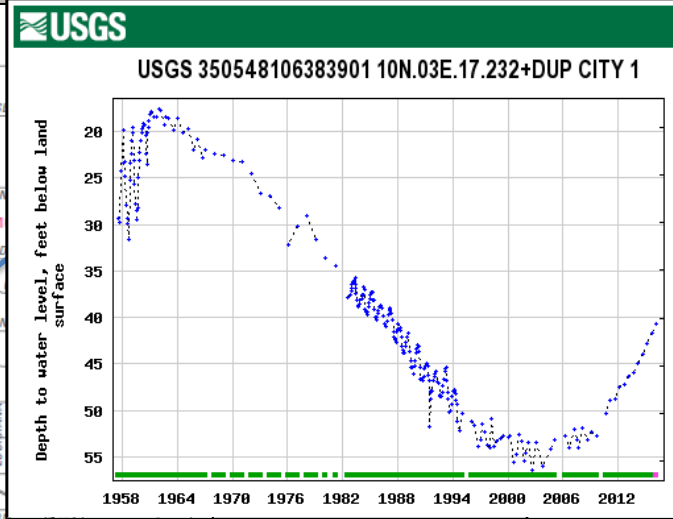
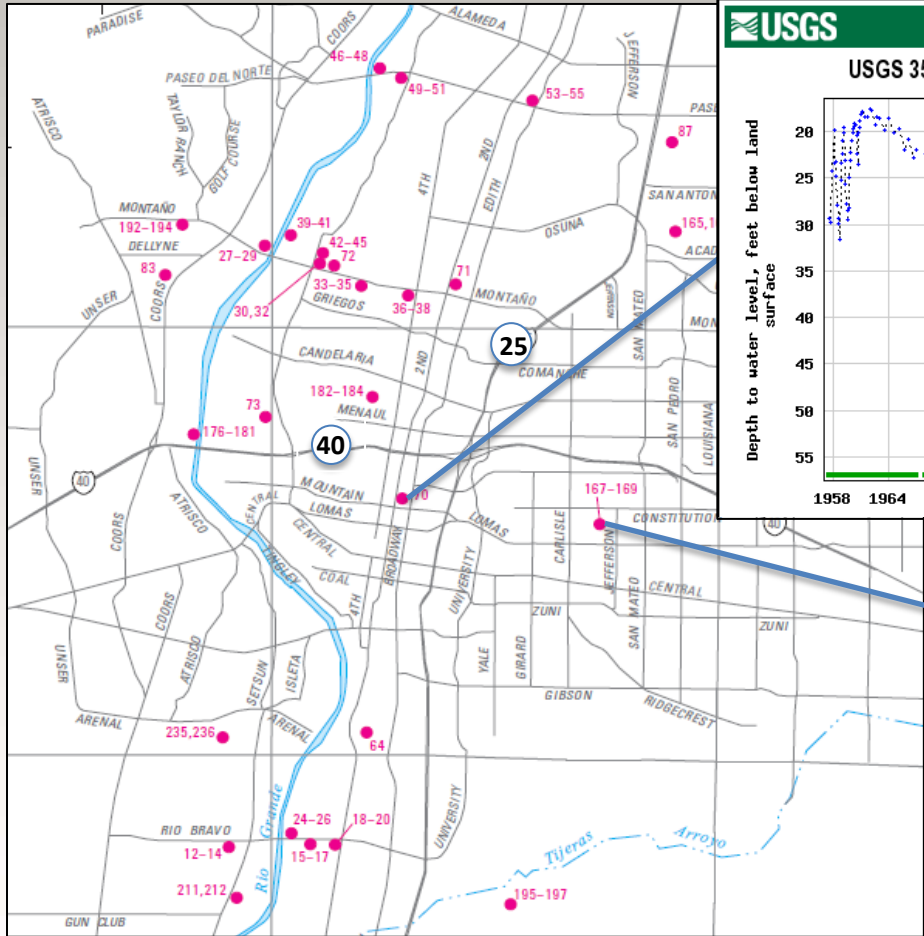
2016





GPCD

The Aquifer is Rising



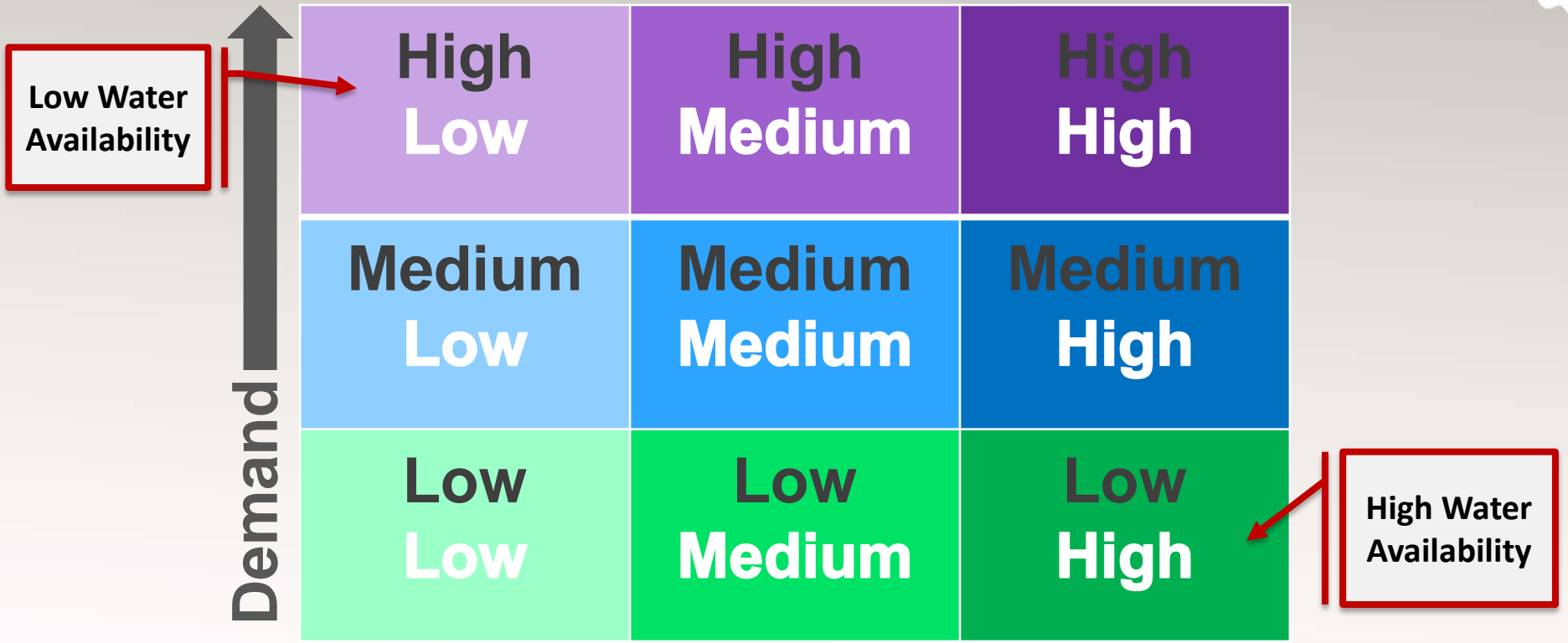
Bear Canyon ASR

~300 AF recharged each year, ~1,425 AF currently in storage

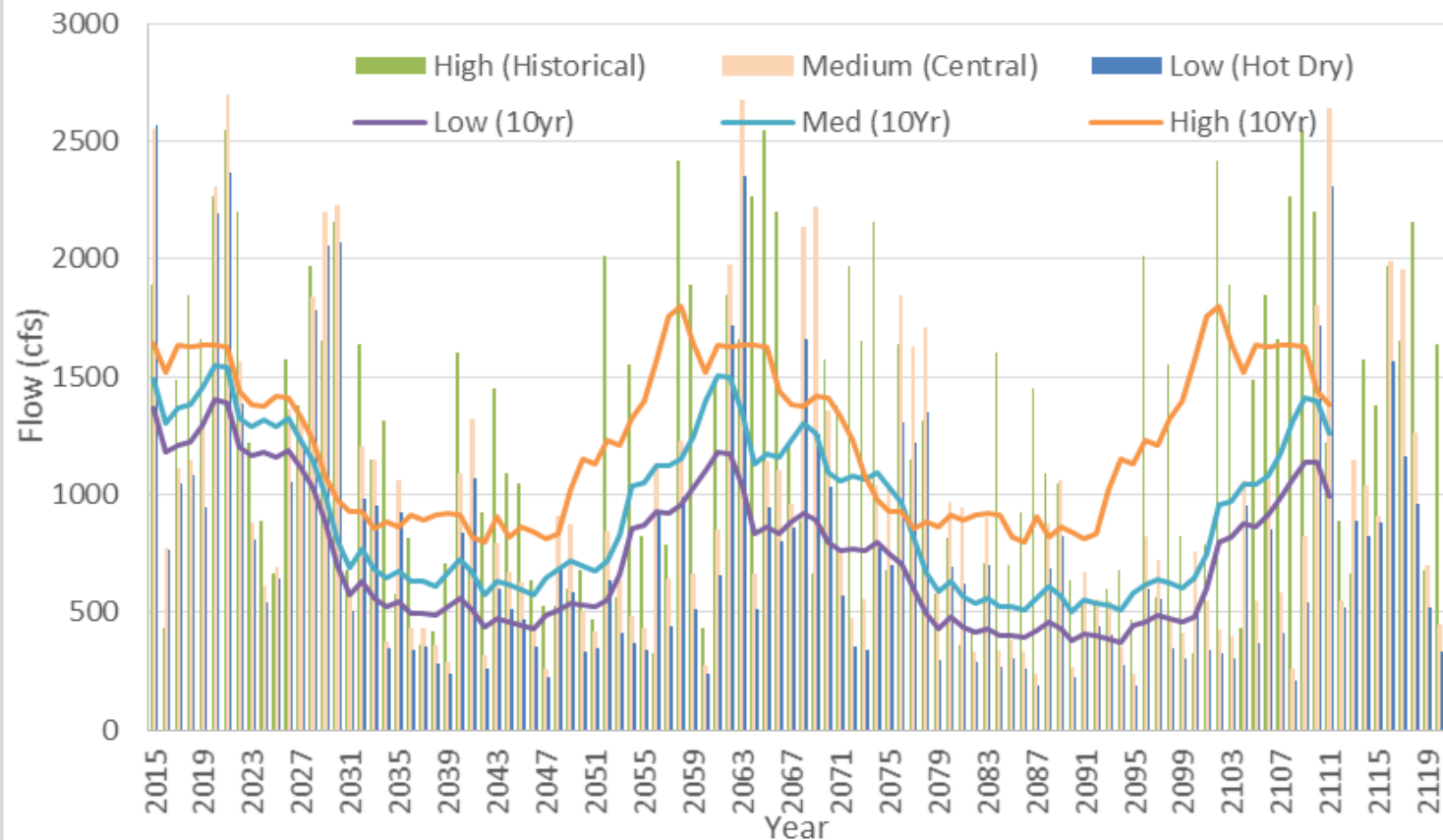
An aerial photograph of the Bear Canyon Arsenic Storage and Recovery (ASR) facility. In the foreground, a stone-lined canal carries water from a pipe on the left. The middle ground features a large, paved area with several tennis courts and a parking lot. In the background, there are residential buildings and a large mountain range under a sunset sky.

Water 2120 *Planning for Uncertainty and Climate Change*

Supply 



Central Gage Flow Projections – Medium / Medium

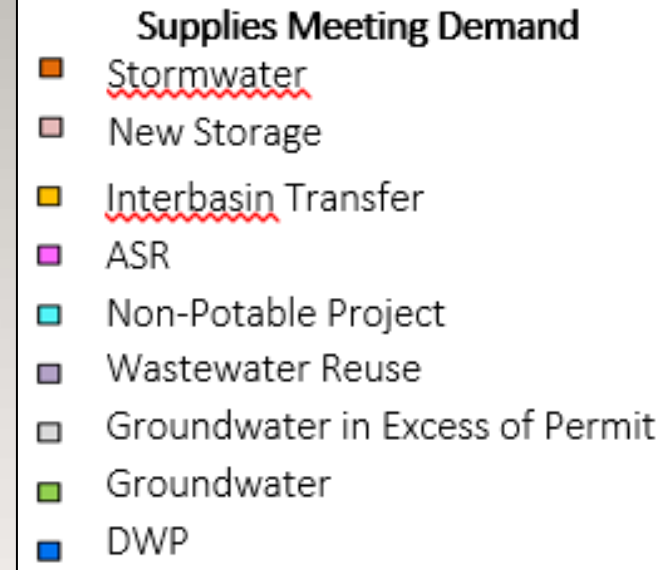
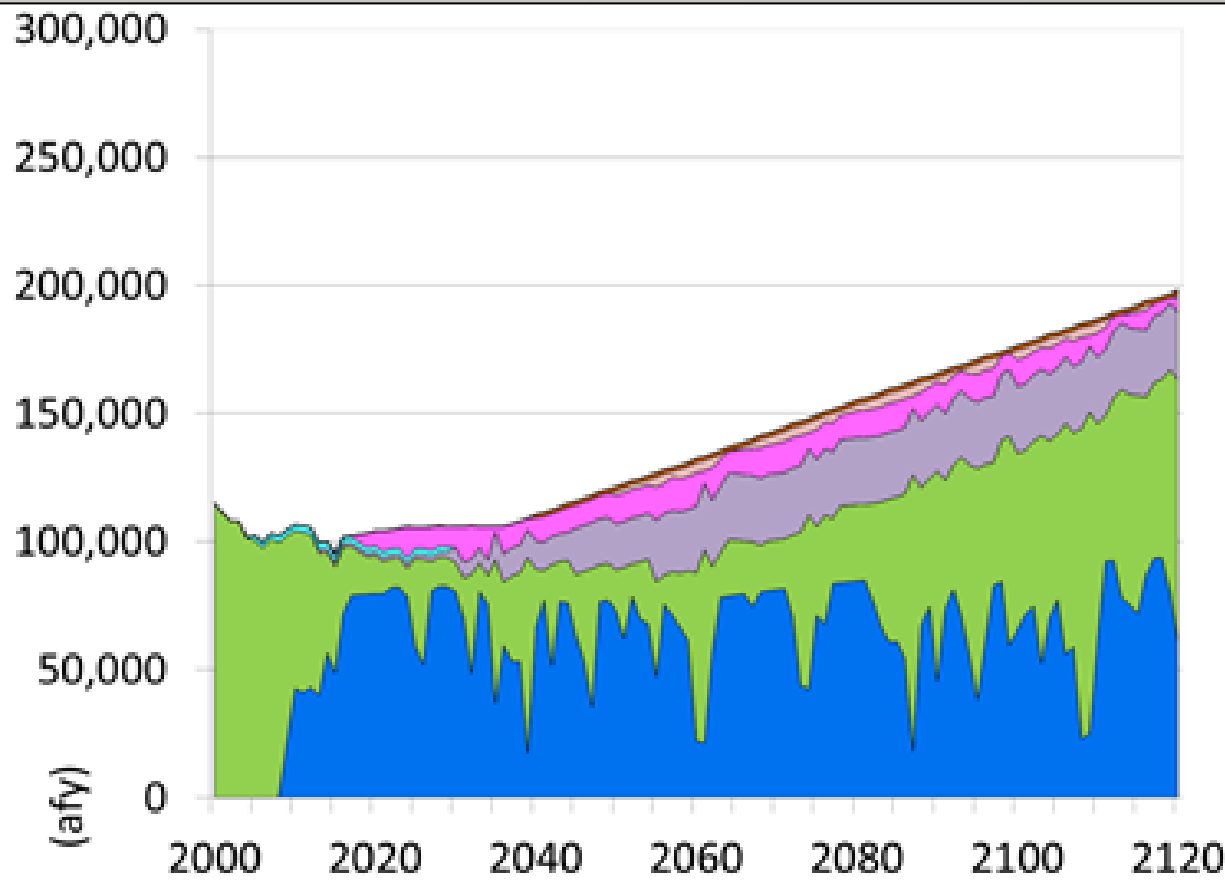


Water 2120 Portfolio



- Existing supplies (groundwater and surface water)
 - Groundwater Reserve Management
- Conservation – 110 GPCD in 20 years
- Reuse – includes ASR and/or new storage
- Connect North I-25 Non-potable to Southside Reuse
- Storm water capture
- Indirect potable reuse
- Watershed management

Portfolio Implementation



Questions?