

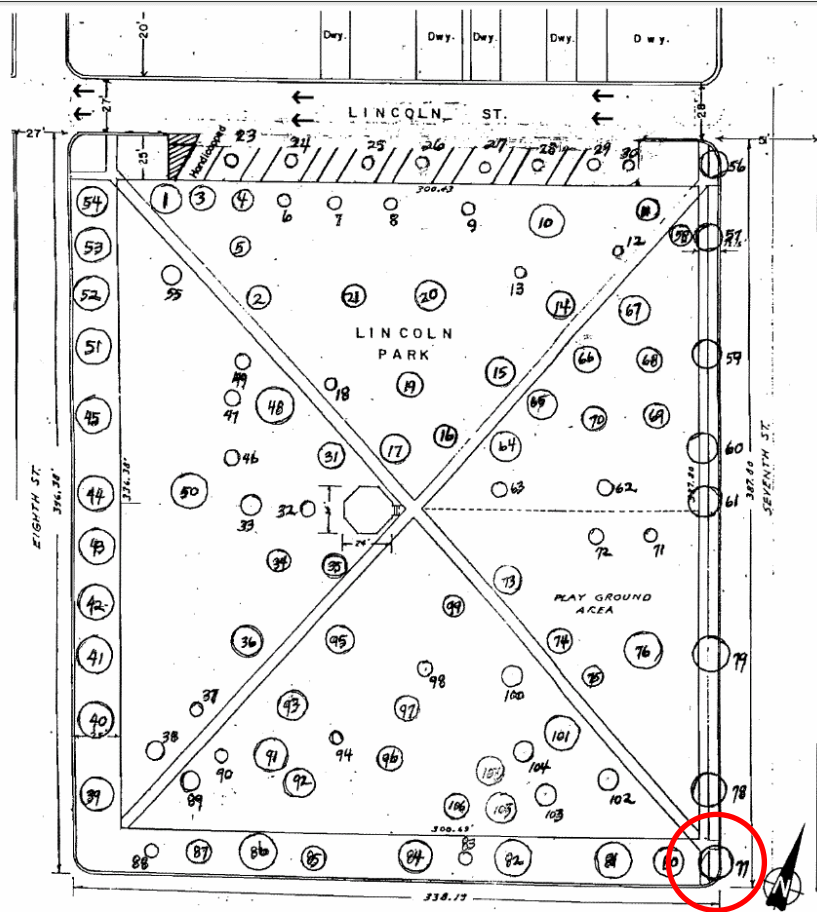
# Appendix A

## Las Vegas, NM Urban Forest Project

### Candidate Trees for Removal

#### Candidate Tree Removals by Park

Lincoln	4
Plaza	6
Carnegie	9
South Pacific	1
Keyes	0

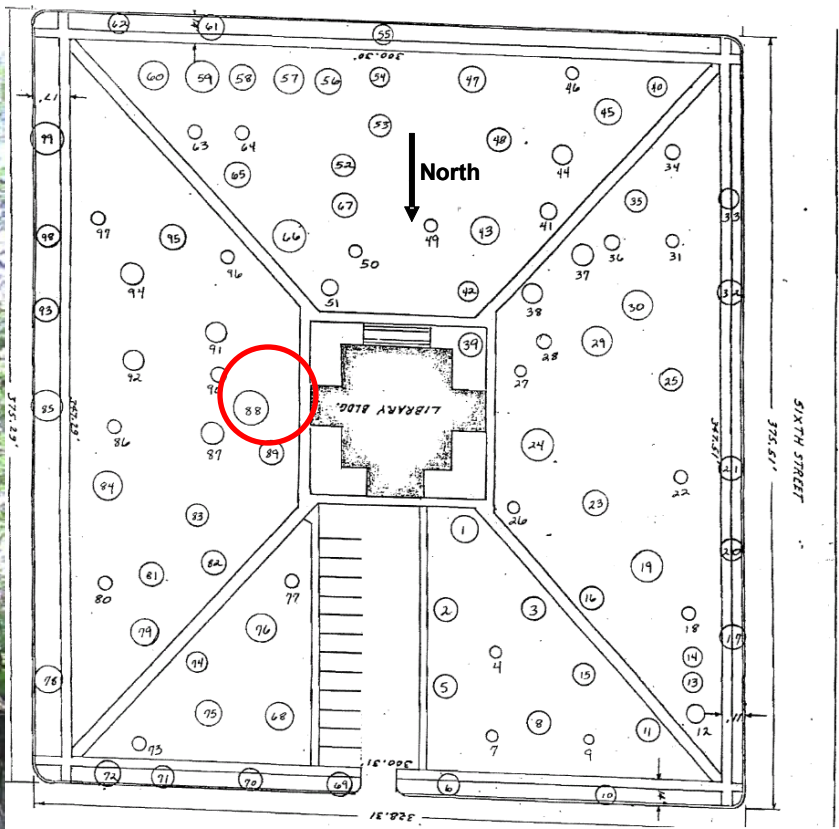


**Removal Tree # 1**  
**Lincoln Park - #77 on diagram**  
 (red dot paint on trunk)

Comments:

- Elm, ~30' tall.
- Extreme injury and die back.
- Street tree.



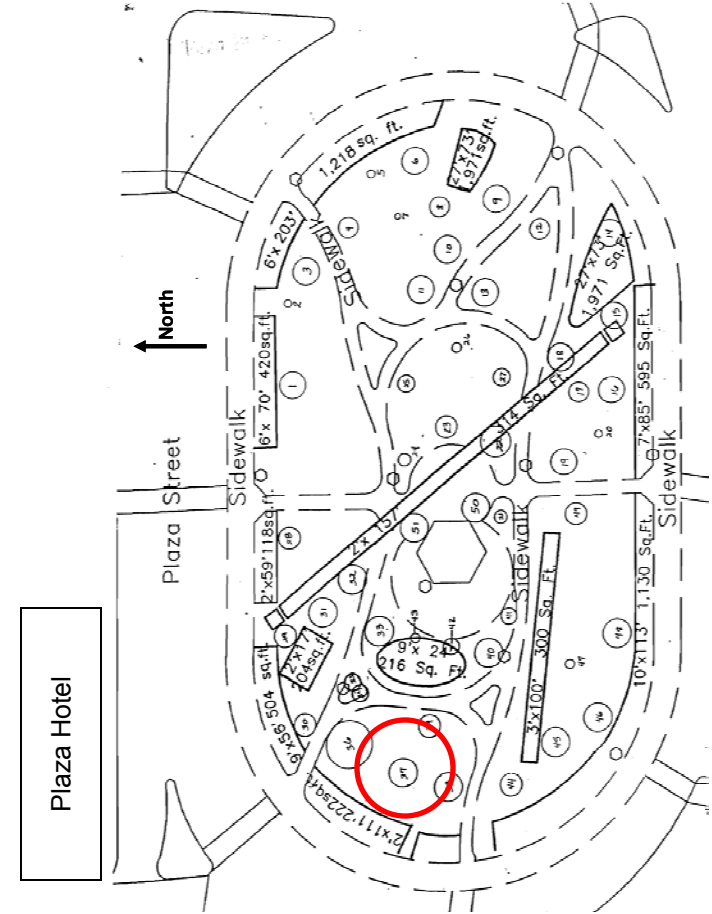


Removal Tree # 2  
Carnegie Park - #88 on diagram  
(red dot paint on trunk)

Comments:

- Elm, ~35' tall.
- ~ 95% deadwood, remainder is epicormic shoots.



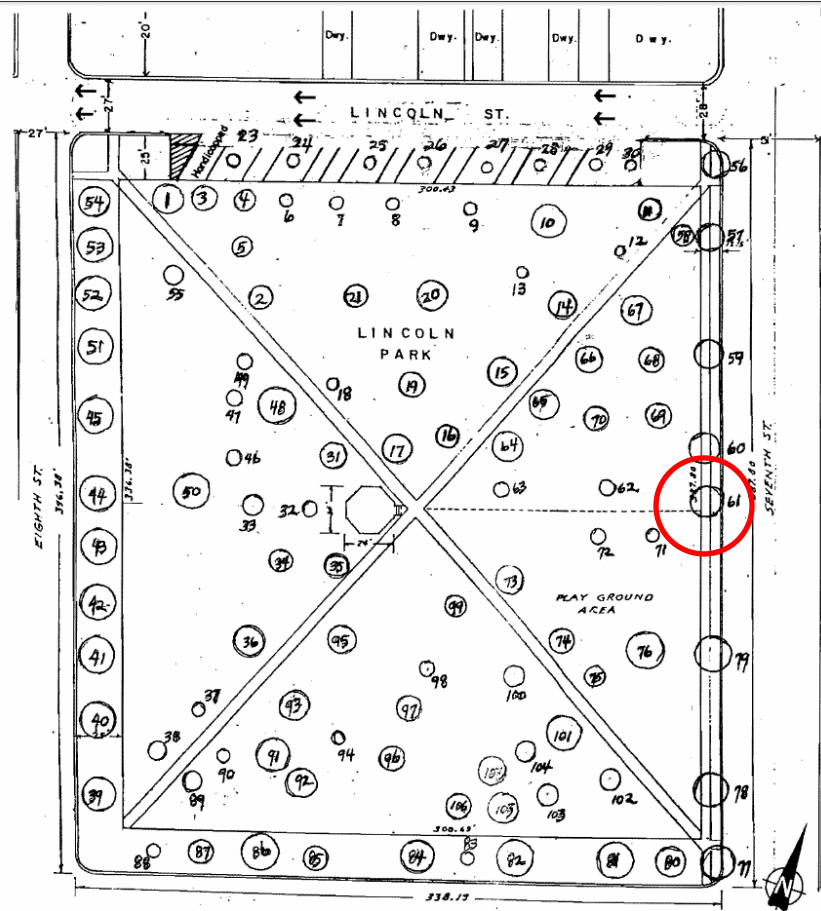


Removal Tree # 3  
 Plaza Park - #37 on diagram  
 (red dot paint on trunk)

Comments:

- Maple, 50-55' tall.
- Extensive decay in stem and all major limbs
- Extremely poor canopy color indicating lack of vigor.



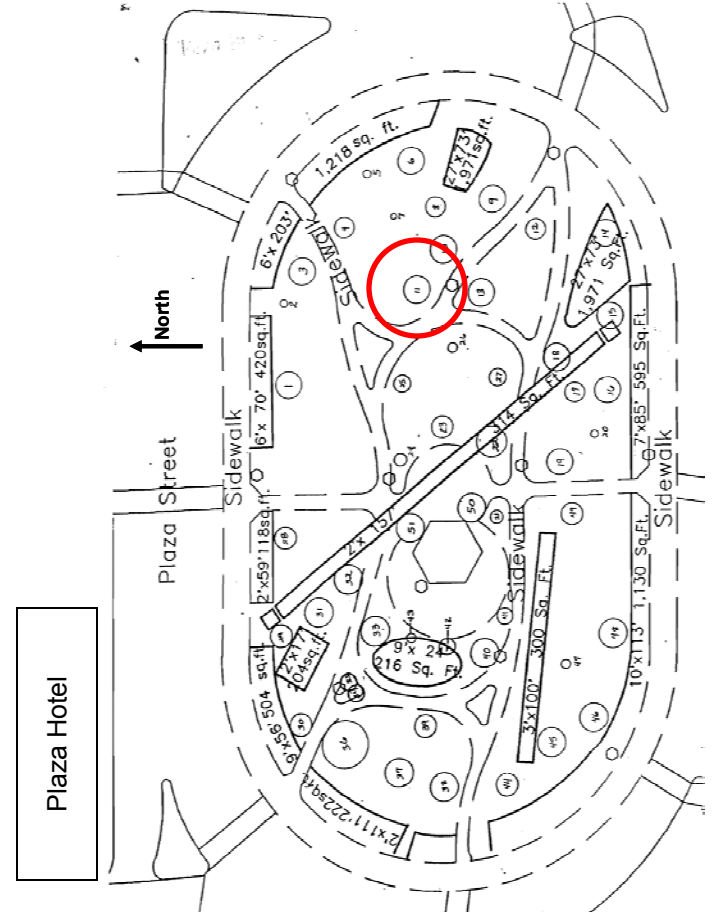


Removal Tree # 4  
Lincoln Park - #61 on diagram  
(red dot paint on trunk)

Comments:

- Elm, ~30' tall.
- Street tree.
- Storm damage and/or topped.
- Decay in main stem at ~10'.



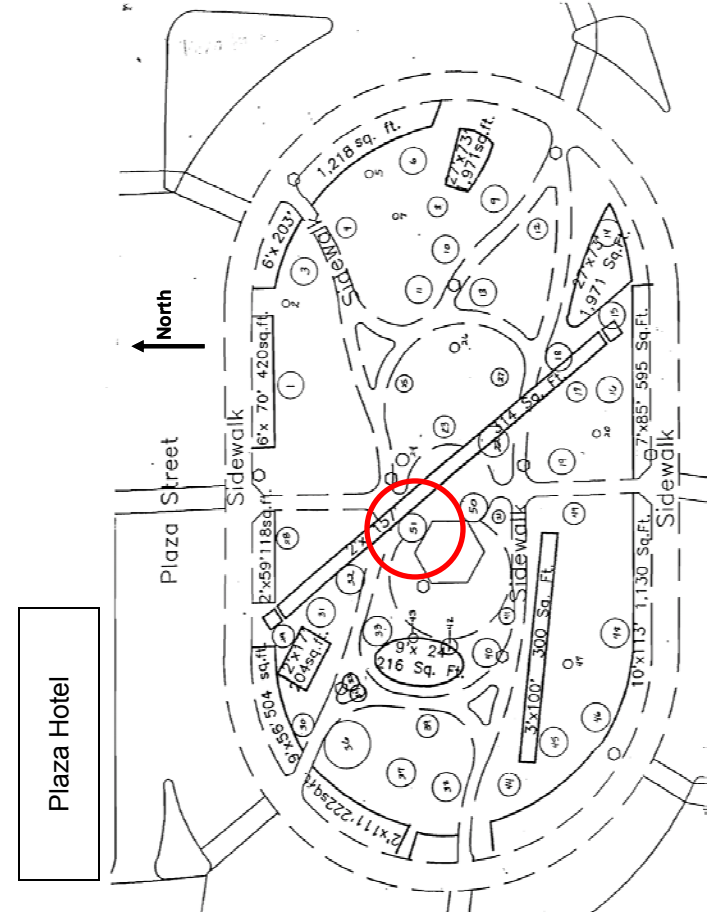


Removal Tree # 5  
Plaza Park - #11 on diagram  
(red dot paint on trunk)

Comments:

- Elm, ~30' tall.
- Extensive decay and decline.
- Heavy limbs unsupported by corresponding tree vigor.



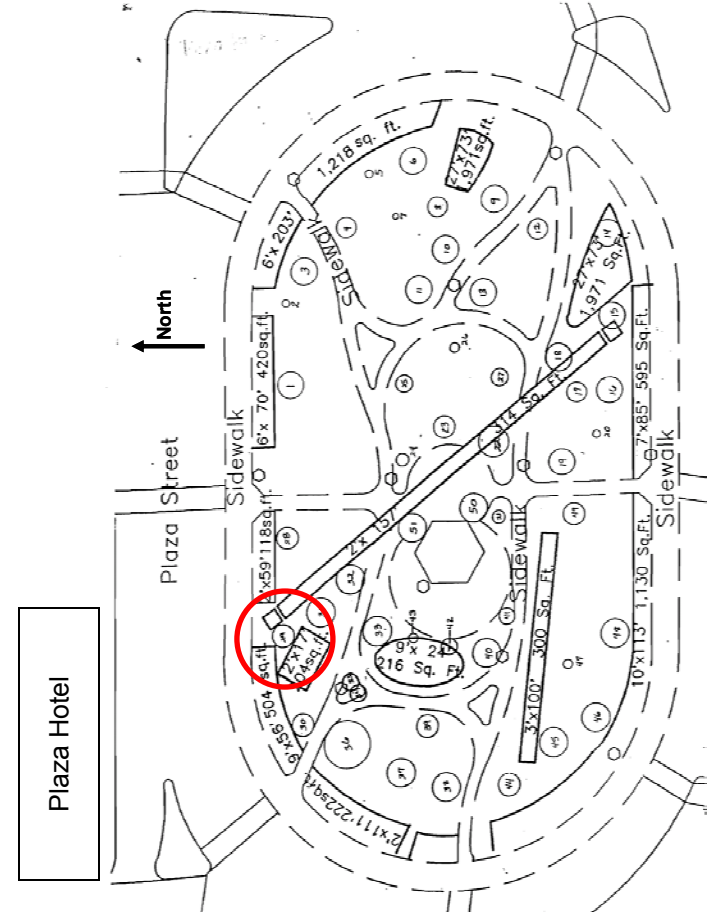


Removal Tree # 6  
Plaza Park - #51 on diagram  
(red dot paint on trunk)

Comments:

- Elm, ~ 40''tall.
- Extensive wound, extending 10' up stem.
- Major limb girdled with wire.



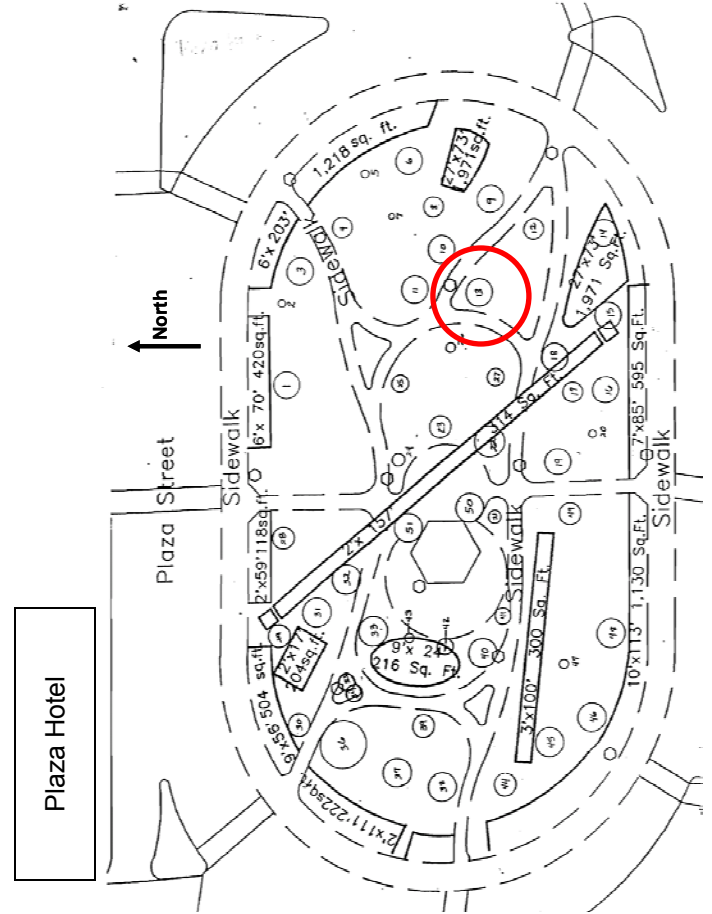


Removal Tree # 7  
Plaza Park - #29 on diagram  
(red dot paint on trunk)

Comments:

- Elm, ~ 40 – 45' tall.
- Significant wound with associated decay in stem (as indicated by lean and by core sample taken).
- Significant lack of vigor.



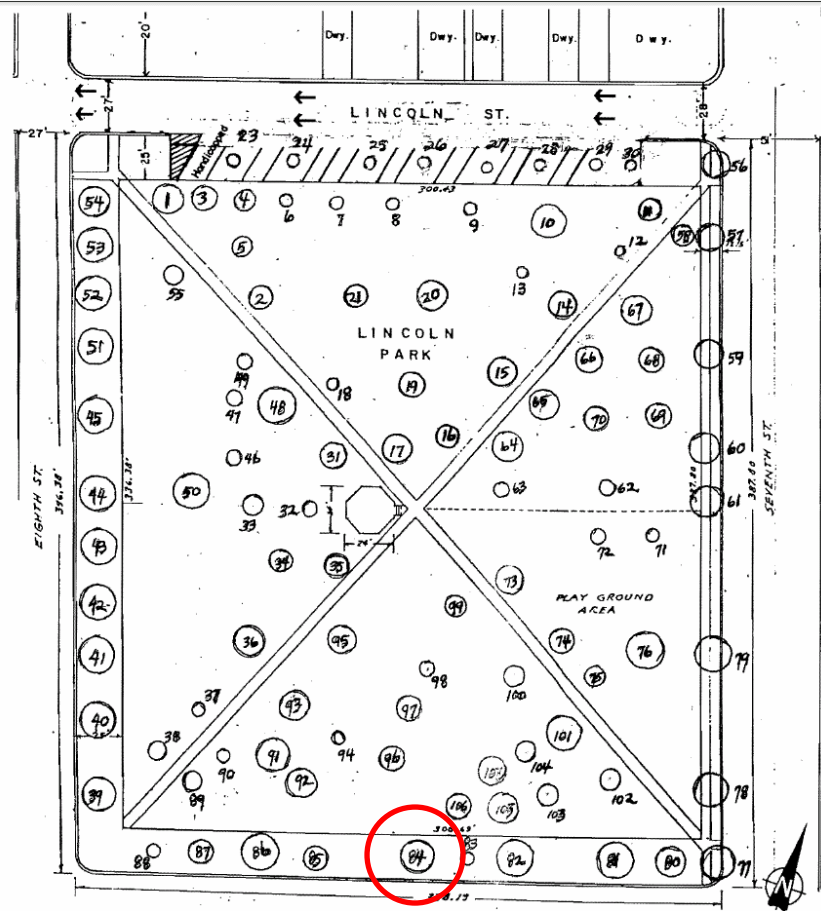


Removal Tree # 8  
Plaza Park - #13 on diagram  
(red dot paint on trunk)

Comments:

- Elm, ~ 25 tall'.
- Mostly dead with epicormic shoots as main source of green.



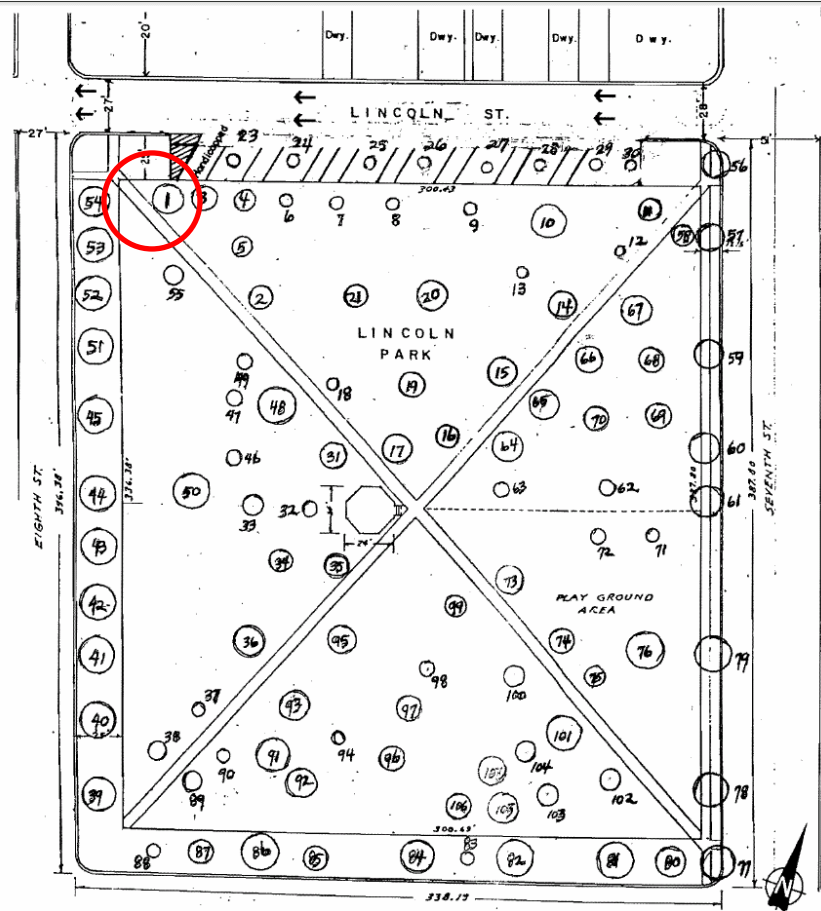


Removal Tree # 9  
 Lincoln Park - #84 on diagram  
 (red dot paint on trunk)

Comments:

- Elm, ~ 25' tall.
- Poor structure – insufficient trunk, all major limbs coming out of the same area, one of which is injured/dying.
- Insufficient canopy indicating lack of vigor.



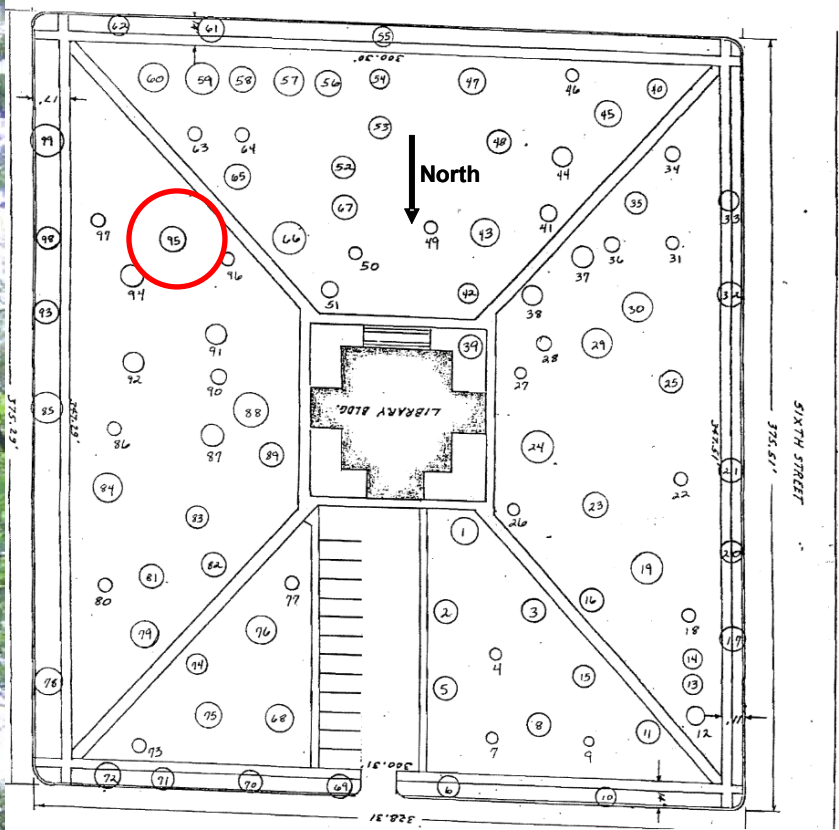


Removal Tree # 10  
 Lincoln Park - #1 on diagram  
 (red dot paint on trunk)

Comments:

- Elm, ~ 30' tall.
- Too much deadwood and too few laterals to sustain its size.
- Target-rich area (car park, street, pedestrian walkway).



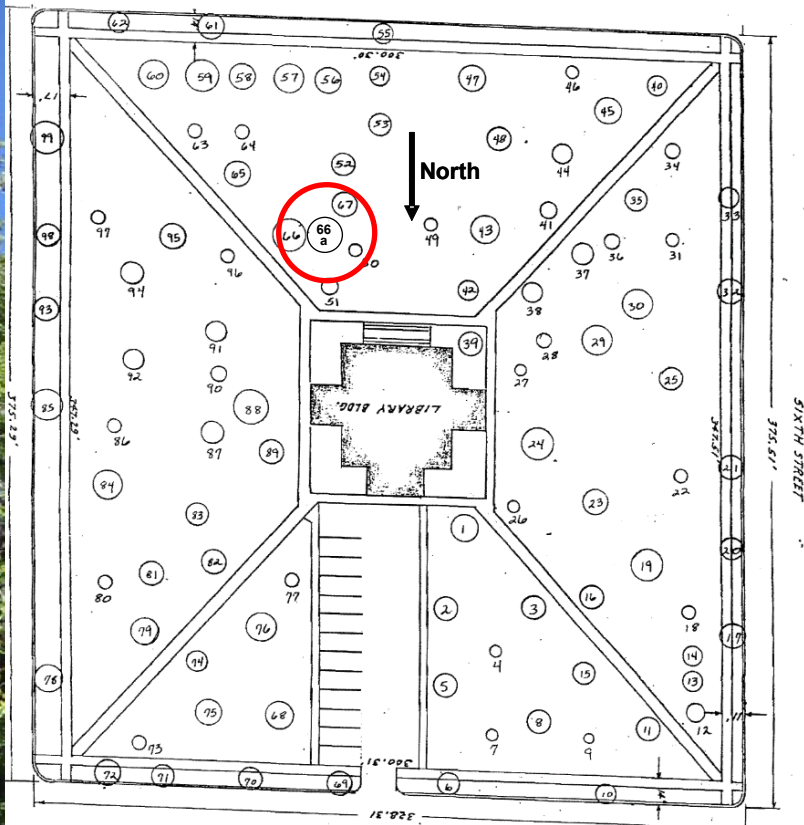


Removal Tree # 11  
Carnegie Park - #95 on diagram  
(red dot paint on trunk)

Comments:

- Elm, ~ 30'tall.
- 95% dead, galls, epicormic shoots, and trunk anomaly at grade.



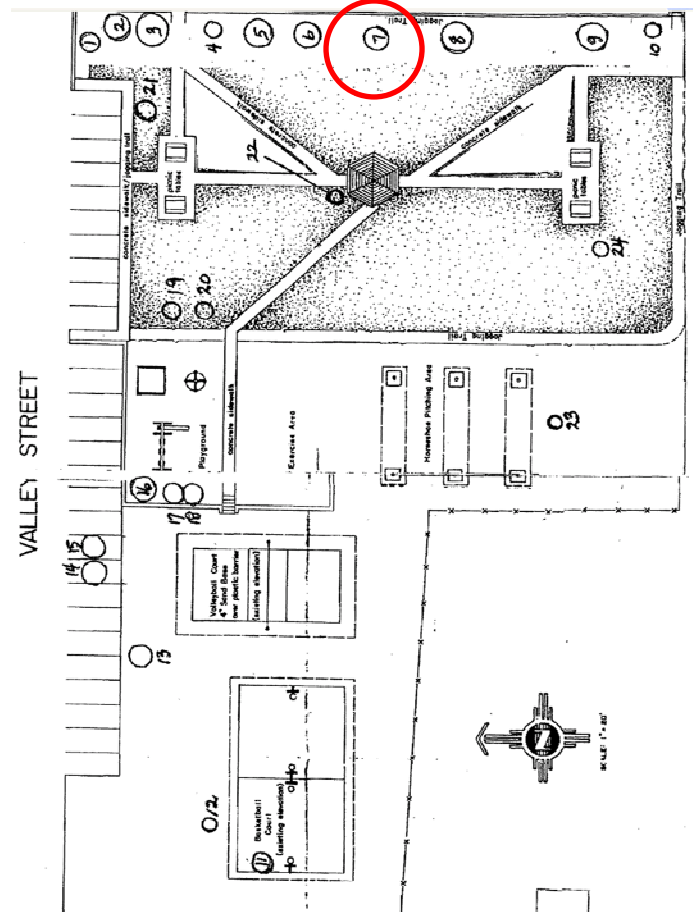


Removal Tree # 12  
Carnegie Park - #66a on diagram  
(red dot paint on trunk)

Comments:

- Elm, ~ 35' tall
- Significant deadwood, stem encircled by galls at ~ 5'.
- Permanent bench as target.



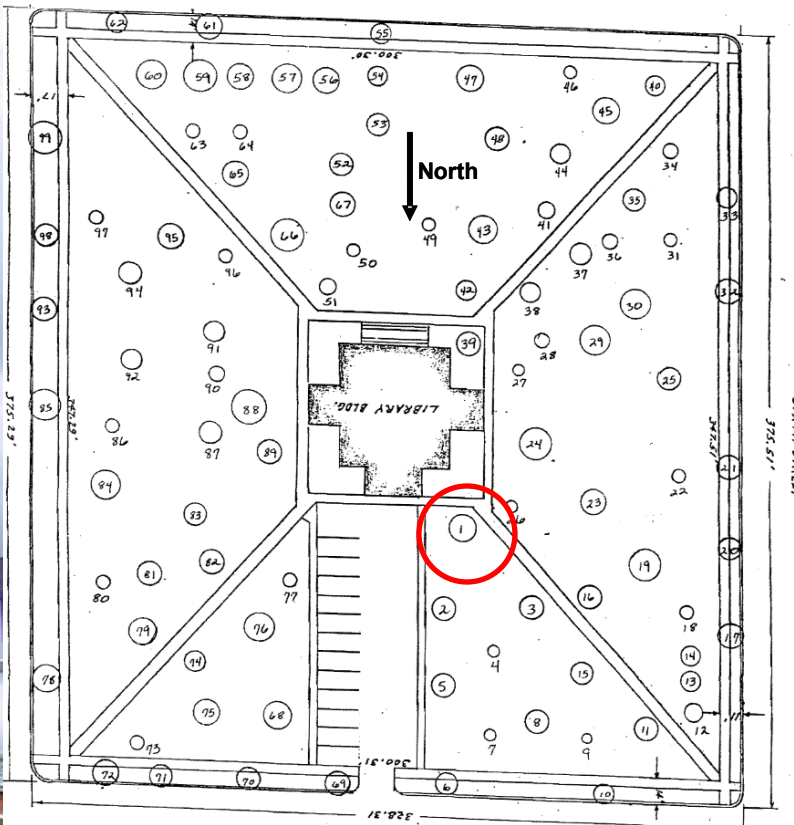


Removal Tree # 13  
S. Pacific Park - #7 on diagram  
(red dot paint on trunk)

Comments:

- Elm, ~ 40'tall. Overhangs South Pacific St.
- Poor trunk taper (indicates lack of good anchor).
- Small leaves and pronounced lack of vigor.

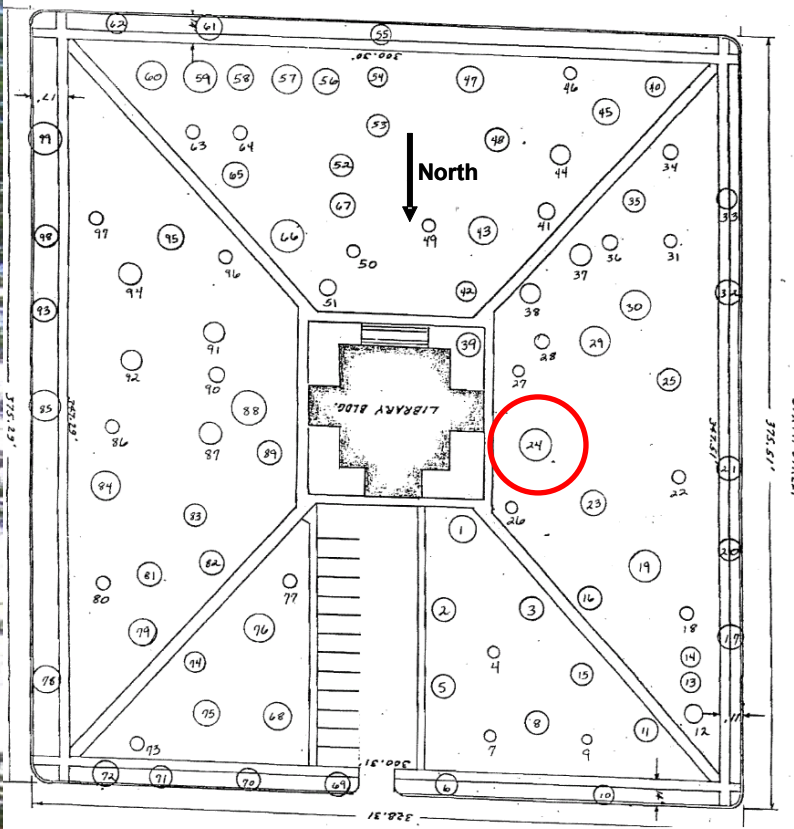




Removal Tree # 14  
Carnegie Park - #1 on diagram  
(red dot paint on trunk)

- Comments:
- Elm, ~ 30' tall.
  - West facing limb presents risk of failure.
  - Main stem has been damaged (topped or broken); insufficient to sustain tree.



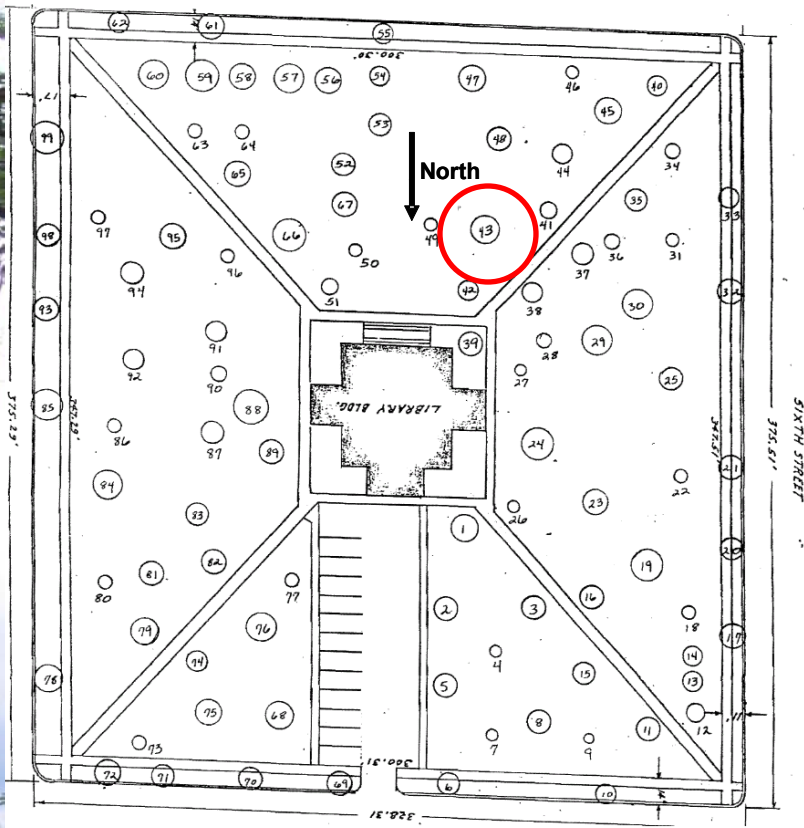


Removal Tree # 15  
Carnegie Park - #24 on diagram  
(red dot paint on trunk)

Comments:

- Elm, ~ 30'tall.
- Extremely poor structure, with too many large limbs radiating from the same area of stem.
- Signs of weak attachment on one or more limb.



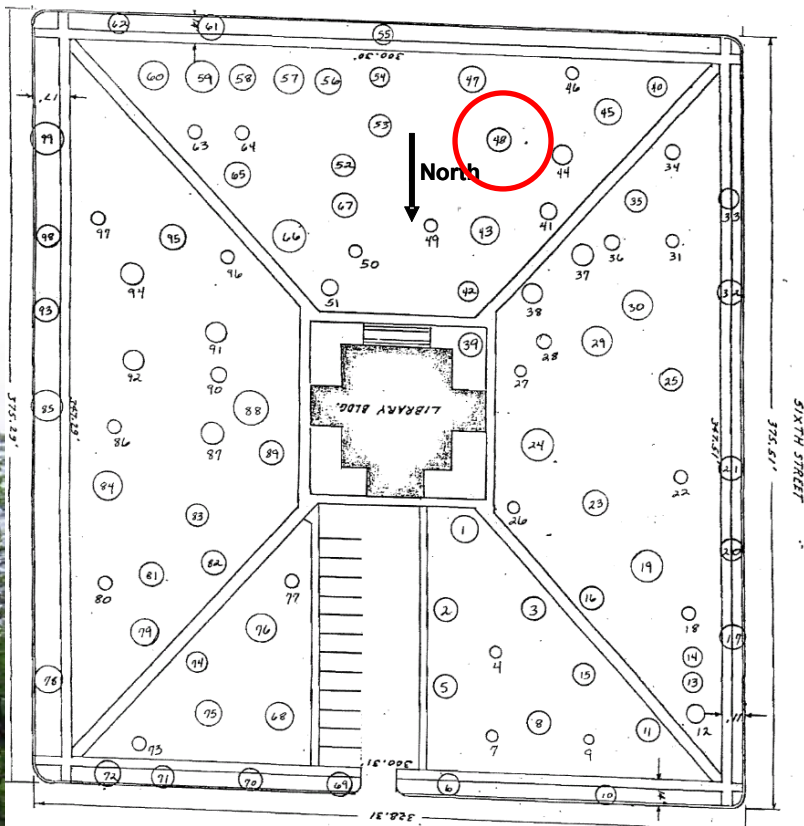


Removal Tree # 16  
Carnegie Park - #43 on diagram  
(red dot paint on trunk)

Comments:

- Elm, ~ 40'tall.
- Lack of vigor and poor color indicate a tree in distress.
- Decay present.



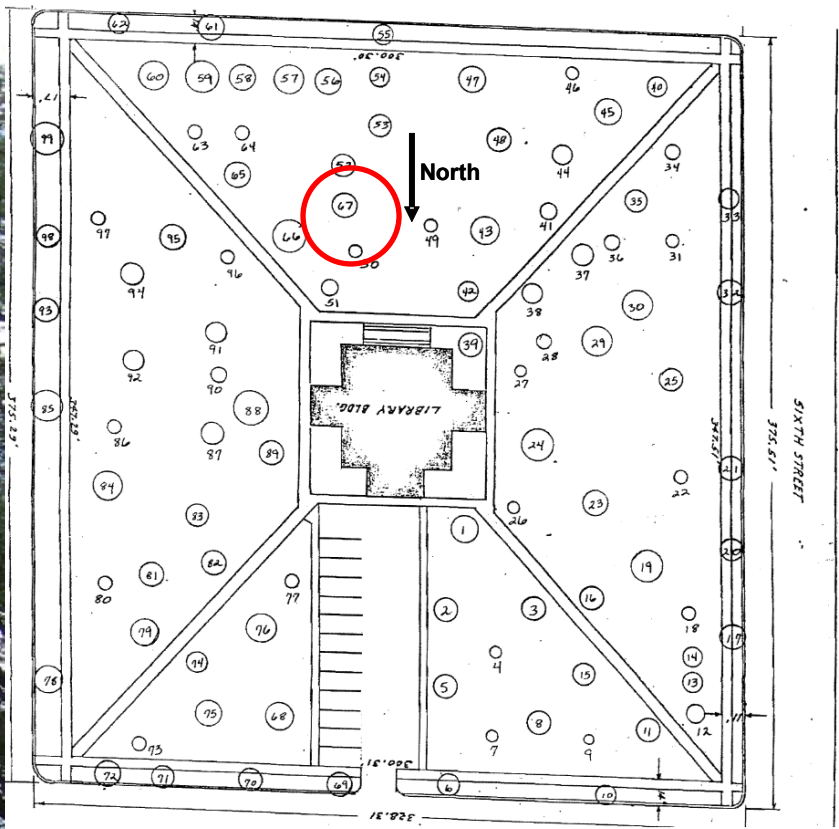


Removal Tree # 17  
Carnegie Park - #48 on diagram  
(red dot paint on trunk)

Comments:

- 
- Elm, 25 – 30'tall.
- Significant deadwood, lack of vigor.
- Lean may indicate further problems.



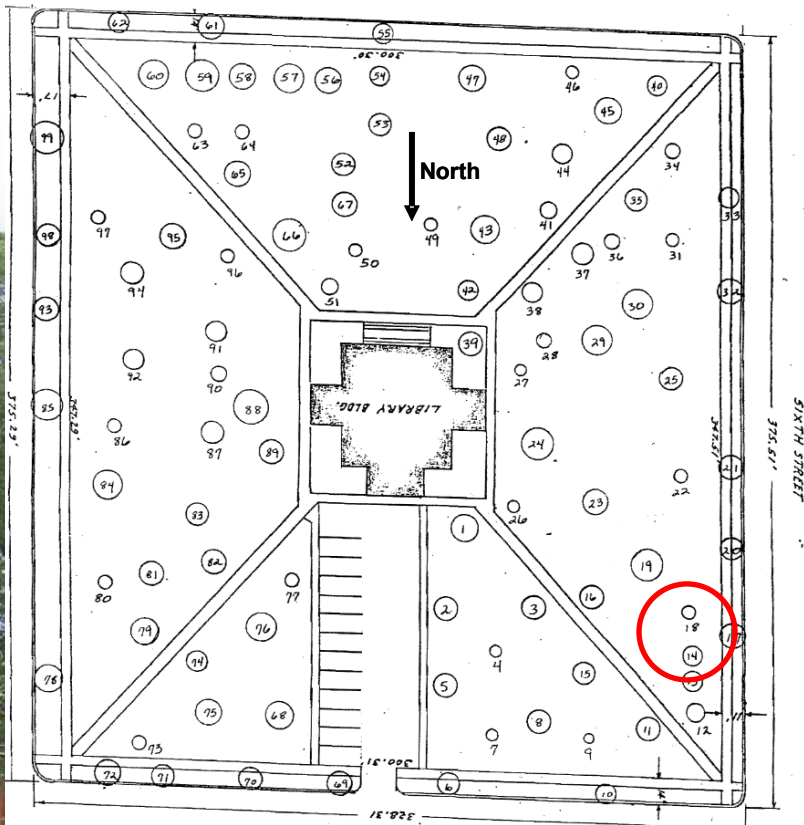


Removal Tree # 18  
Carnegie Park - #67 on diagram  
(red dot paint on trunk)

Comments:

- Elm, ~ 25 – 30' tall.
- Lack of canopy and vigor.
- Wound at ~ 12' in one major limb.





Removal Tree # 19  
Carnegie Park - #14 on diagram  
(red dot paint on trunk)

Comments:

- Probable elm, ~ 30' tall.
- Dead top 20', with a fringe of epicormic shoots only at ~ 10'.







# Appendix B

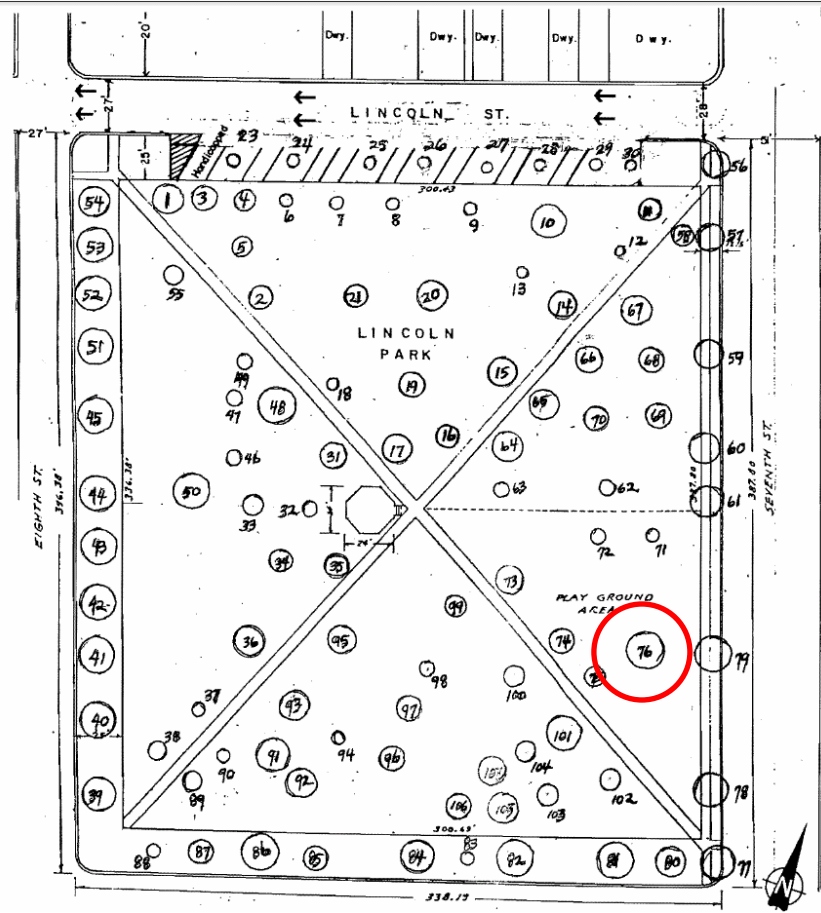
## Las Vegas, NM Urban Forest Project

### Candidate Trees for Pruning

#### Candidate Tree to Prune by Park

Lincoln	2
Plaza	8
Carnegie	7
South Pacific	1
Keyes	2



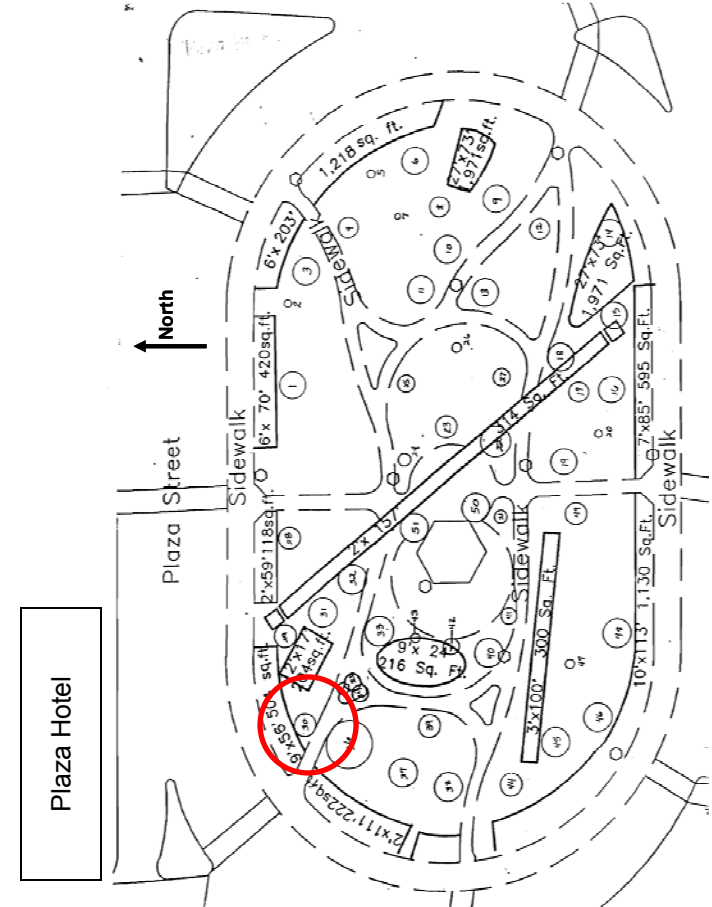


Pruning Tree # 1  
Lincoln Park - #76 on diagram  
(yellow dot paint on trunk)

Comments:

- Elm, ~50' tall, provides significant playground shade
- Needs crown cleaning, crown thinning, selective structural pruning
- Goal is to improve safety and retention



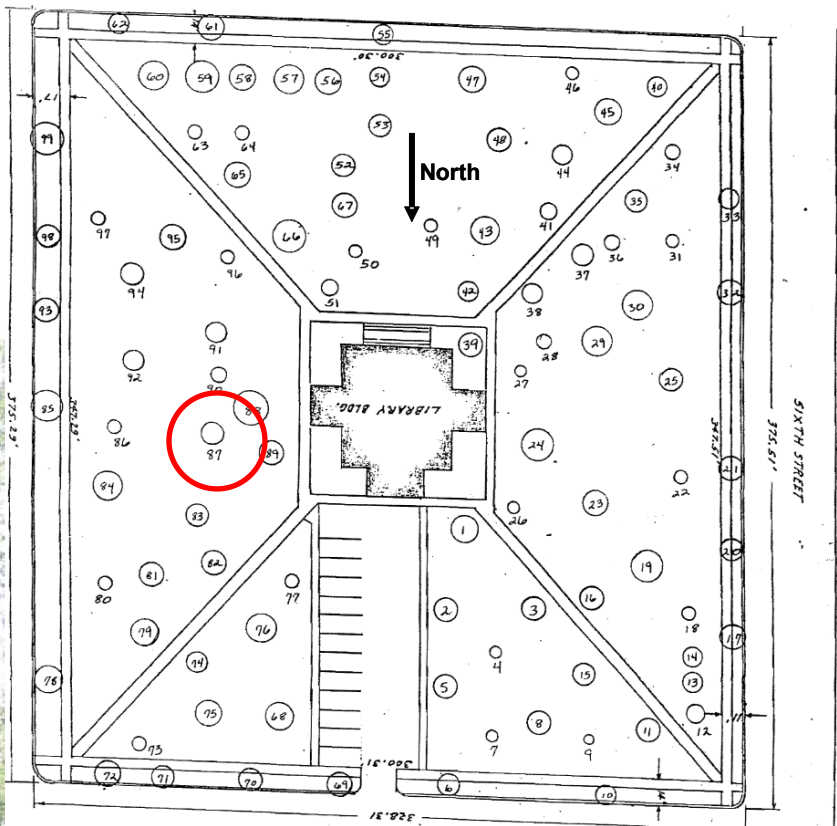


Pruning Tree # 2  
 Plaza Park - #30 on diagram  
 (yellow dot paint on trunk)

Comments:

- Elm, 40-50' tall
- Street tree, anchors Plaza Park corner
- Needs crown cleaning and reduction of weight on limbs overhanging street, parked cars, pedestrian walkways and next to street lamp.
- Goal is to reduce street side limb failure risk in target-rich environment.





**Pruning Tree # 3**  
**Carnegie Park - #87 on diagram**  
**(yellow dot paint on trunk)**

Comments:

- Elm, 55-60' tall
- Significant park tree
- Needs crown cleaning and aerial inspection to identify and remediate any significant problems detected.
- Goal is to improve retention of tree



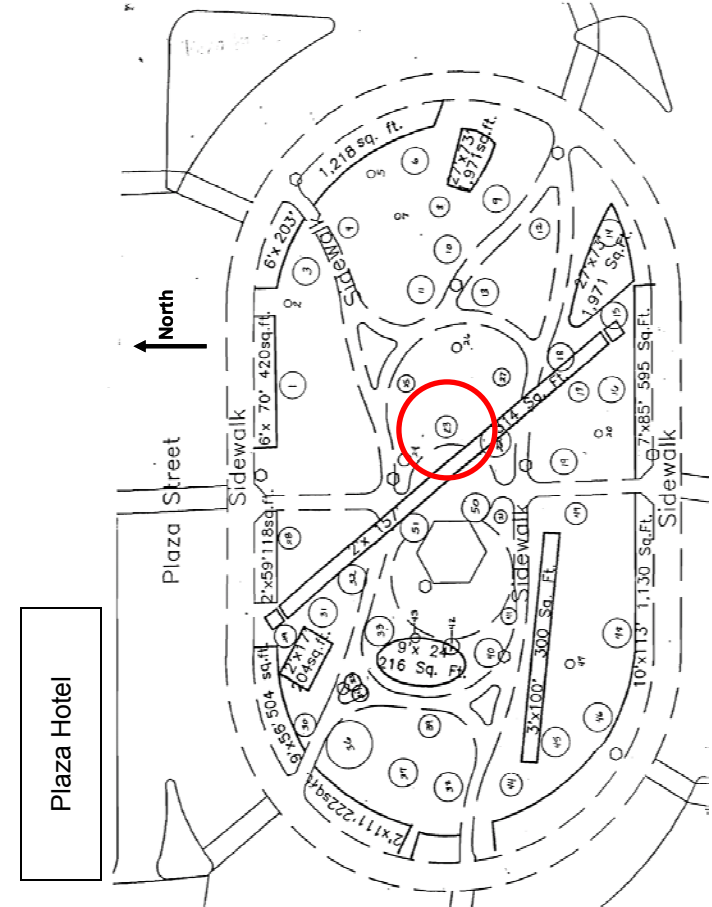


**Pruning Tree # 4**  
Keys Park - #NN on diagram  
(yellow dot paint on trunk)

Comments:

- Elm, ~40' tall
- Significant tree; the only shade in playground area.
- Needs crown thinning and restoration (from bad cuts).
- Remove lower stem of codominant limb, on NE side, ~ 25' up.
- Goal is to improve safety and retention of tree.





Pruning Tree # 5  
Plaza Park - #23 on diagram  
(yellow dot paint on trunk)

Comments:

- Elm, ~ 30 – 40' tall
- Thin canopy to reduce wind drag through tree.
- Despite evidence of some decay, an otherwise healthy appearing tree of value to park.



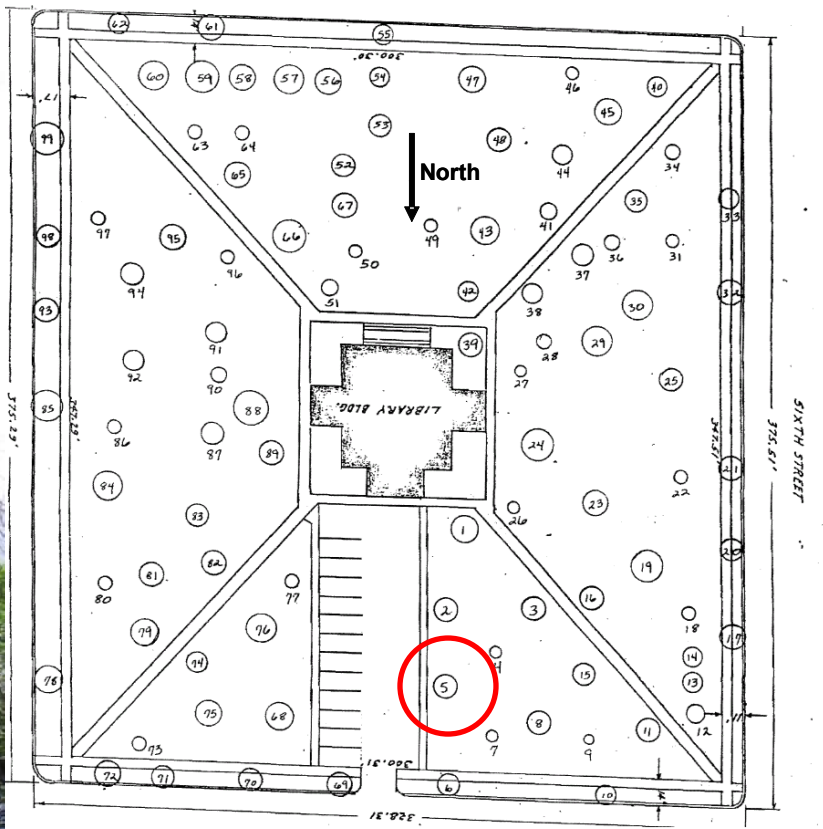


Pruning Tree # 6  
Keyes Park - #129 on diagram  
(yellow dot paint on trunk)

Comments:

- Elm, ~ 30' tall.
- Structural pruning reduce weight of limbs on west side of tree.
- Clean and restore crown (prune damage and poor pruning cuts).
- Goal is to reduce risk of poor weight distribution and retain tree. This tree has flaws but is deemed important to the site..





Pruning Tree # 7  
Carnegie Park - #5 on diagram  
(yellow dot paint on trunk)

Comments:

- Elm, ~ 30' tall
- Clean and thin crown, prune west side of tree over parking lot.
- Goal is to reduce risk to cars and pedestrians in parking lot.

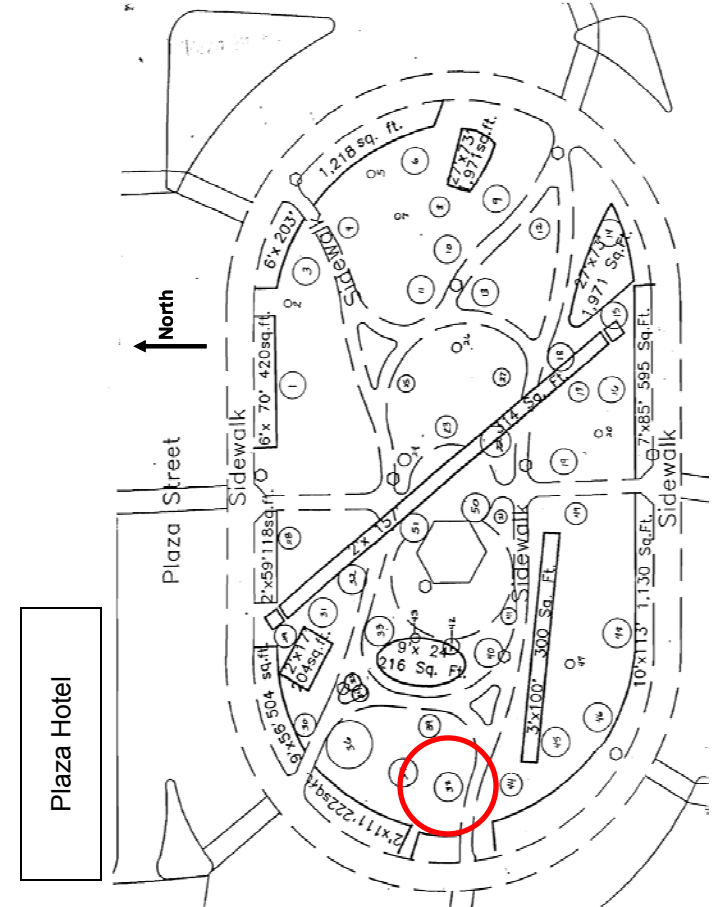












Pruning Tree # 10  
 Plaza Park - #38 on diagram  
 (yellow dot paint on trunk)

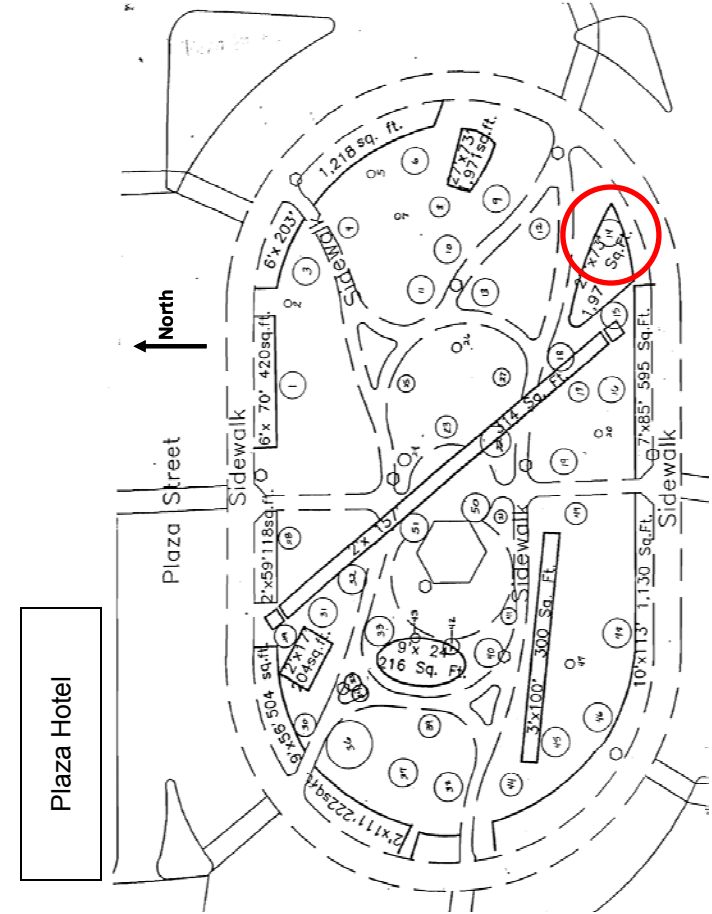
Comments:

- Elm, ~ 30' tall
- Prune limb where indicated to reduce weight on limb.
- Clean and thin crown, as needed.
- Goal is to remediate a poor weight distribution (due to poor structure ) and reduce risk to park users and pedestrians.







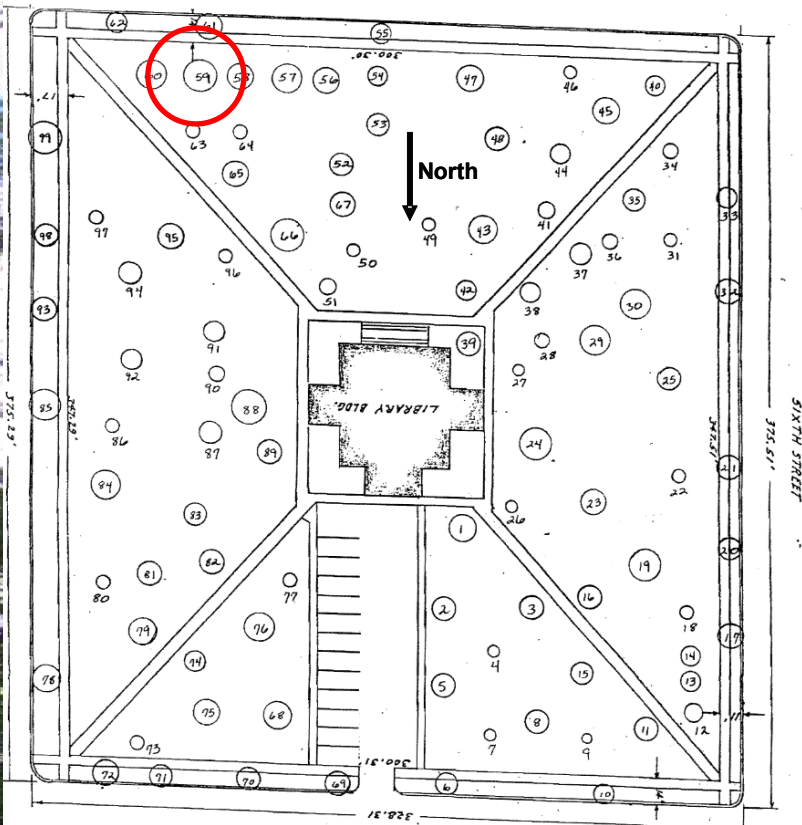


Pruning Tree # 12  
 Plaza Park - #14 on diagram  
 (yellow dot paint on trunk)

Comments:

- Elm, 30 to 40' tall
- Prune to reduce overhang on south side.
- Goal is to reduce risk of limb failure on target-rich side (cars and pedestrians)



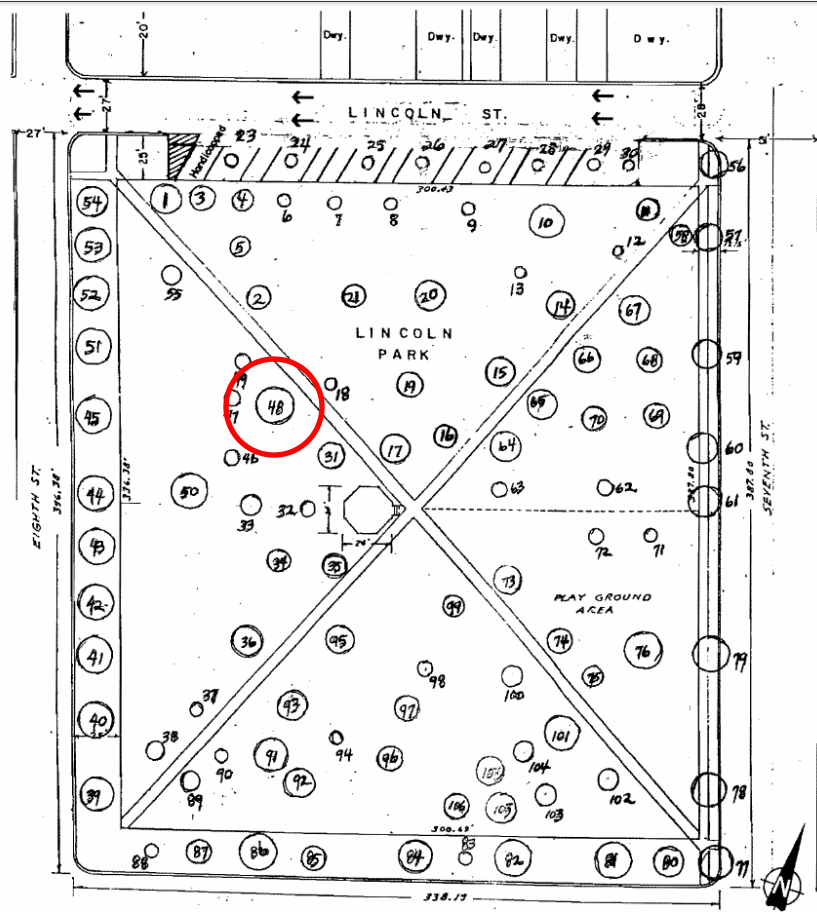


Pruning Tree # 13  
Carnegie Park - #59 on diagram  
(yellow dot paint on trunk)

Comments:

- Elm, ~ 40 to 50' tall
- Structural prune – subordinate or thin multiple main branches.
- Goal is retention of a significant and otherwise reasonably healthy tree.



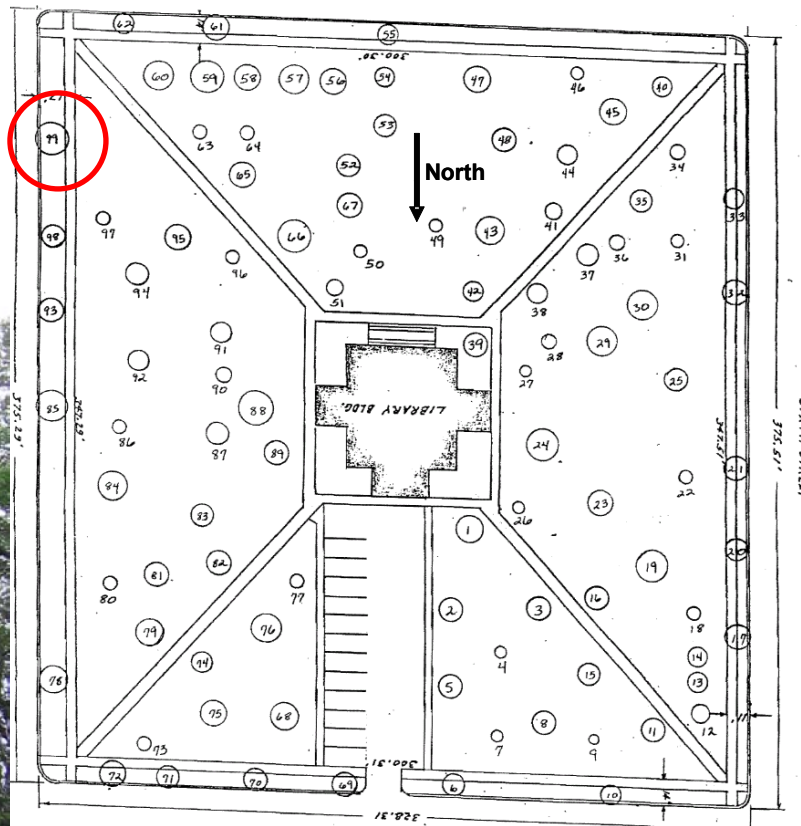


Pruning Tree # 14  
Lincoln Park - #48 on diagram  
(yellow dot paint on trunk)

Comments:

- Elm, ~ 30 to 35' tall
- Restore damaged tree - remove significant dead limb
- Clean and thin crown, as warranted.
- Goal is to clean and re-shape for retention.



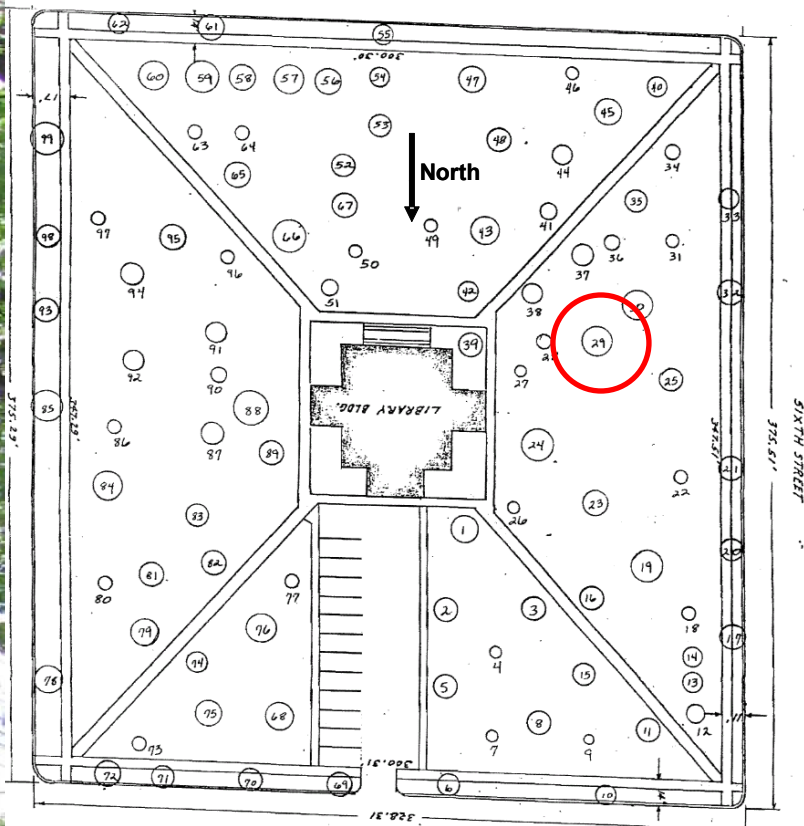


**Pruning Tree # 15**  
Carnegie Park - #98 on diagram  
(yellow dot paint on trunk)

Comments:

- Elm, ~ 35 to 45' tall
- Structural prune – Remove or subordinate multiple secondary branches.
- Clean and restore crown (remove poor pruning cuts).
- Goal is to reduce risk and prolong life of street tree.



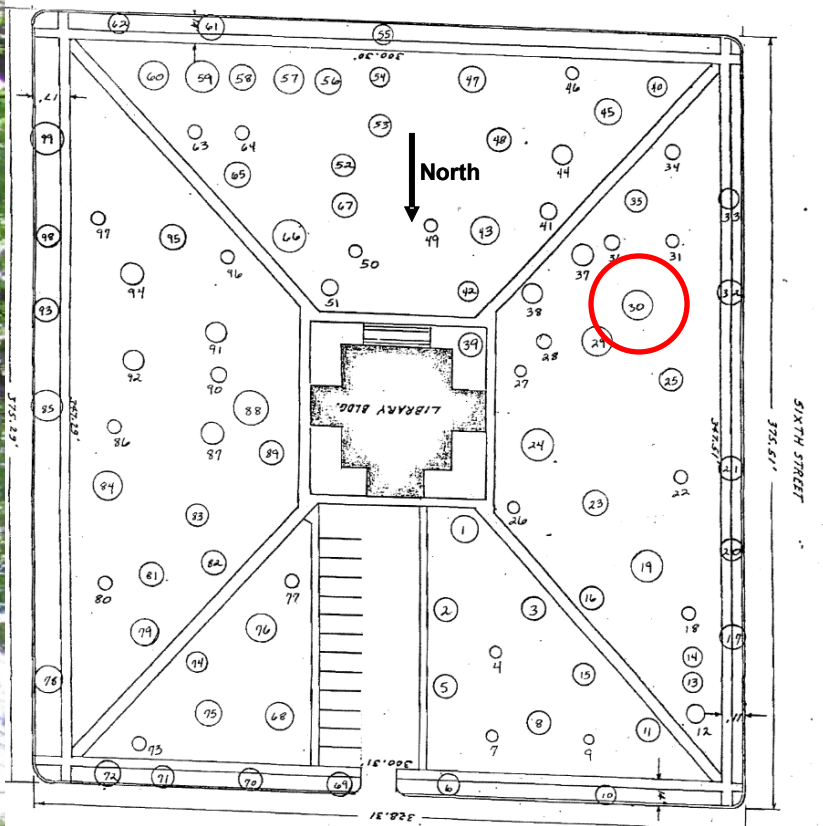


Pruning Tree # 16  
Carnegie Park - #29 on diagram  
(yellow dot paint on trunk)

Comments:

- Elm, ~ 30 to 40' tall
- Clean, thin, and structurally prune.
- Goal is to reduce risk and prolong life of tree until replacement trees are viable.



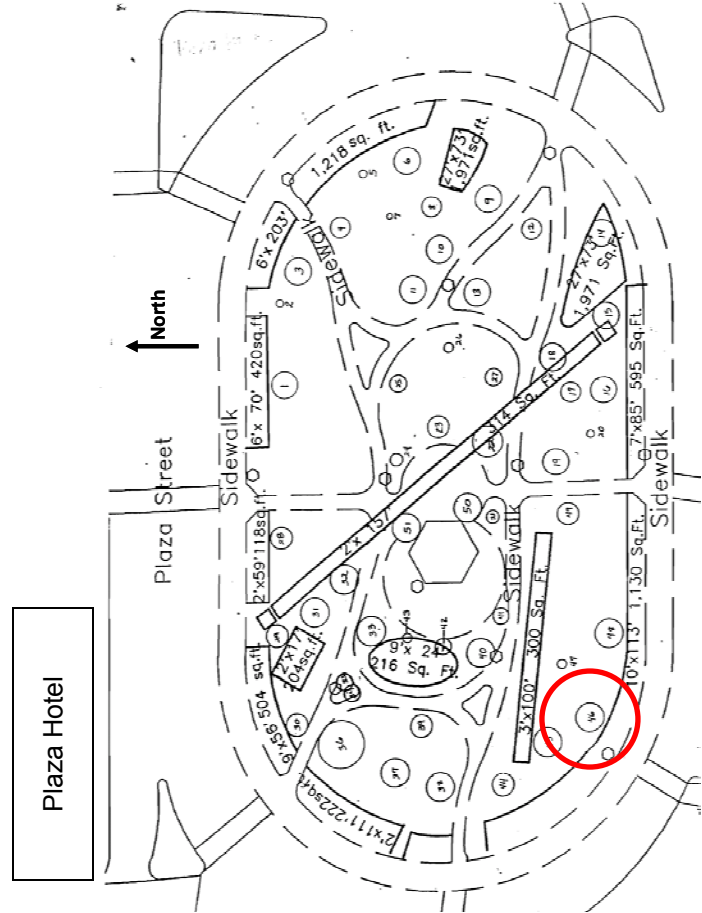


Pruning Tree # 17  
Carnegie Park - #30 on diagram  
(yellow dot paint on trunk)

Comments:

- Elm, ~ 30 to 40' tall
- Clean, thin, and structurally prune.
- Goal is to reduce risk and prolong life of tree until replacement trees are viable.



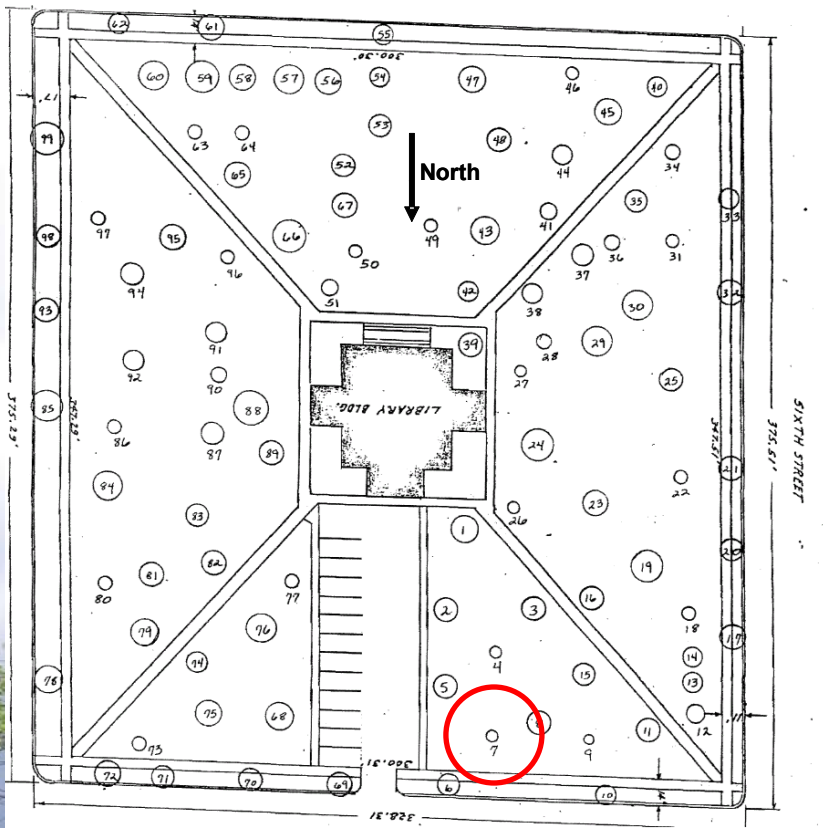


Pruning Tree # 18  
 Plaza Park - #46 on diagram  
 (yellow dot paint on trunk)

Comments:

- Elm, ~ 30 to 40' tall
- Clean and thin crown. Prune overhanging limbs.
- Tree has major faults (galls, epicormic shoots, reduced vigor) but its removal would leave a significant hole in the park canopy.
- Goal is to plant replacement tree(s) while maintaining existing tree for 3 to 5 years before its removal.



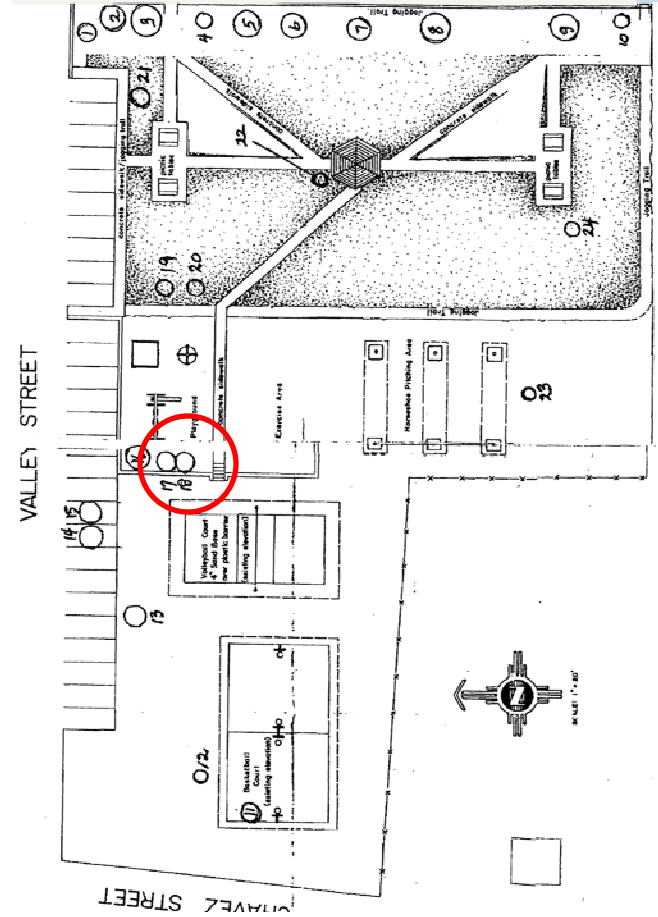


Pruning Tree # 19  
Carnegie Park - #7 on diagram  
(yellow dot paint on trunk)

Comments:

- Ash, ~ 30 to 40' tall
- Reduce weight on NE facing limb by thinning.
- Clean crown.
- Tree has poor structure and vigor; it bears watching in subsequent years.
- Goal is to reduce risk to pedestrians and cars.





Pruning Tree # 20  
S. Pacific Park - #17/18 on diagram  
(yellow dot paint on trunk)

Comments:

- Elm, ~ 25 to 30' tall
- Multi-stem tree. Prune one stem where indicated
- Thin and reduce overhang on opposite stem, closest to playground equipment.
- Goal is to improve poor structure and reduce risk to playground in a park that has few trees. This tree bears watching in future years.